



FAIRVILLE



Funded by the
European Union

commons/pace

Fairville mutual learning seminar (4th session)

Collective mapping

Thursday, 01 February 2024
2.30 pm – 4.00 pm CET

Commonspace



This project has received funding from the European Union's Horizon Europe research and innovation programme under the grant agreement No. 101094991. Views and opinions expressed are however those of the author(s) only and do not necessarily reflect those of the European Union. Neither the European Union nor the granting authority can be held responsible for them.

Outline

- 1/ *What do we mean by « collective mapping »? (slido)*
- 2/ *Methodology and Steps Eleni Mougiakou*
- 3/ *Mapping the public space (values, access, quality) (blended method) Eleni Mougiakou*
- 4/ *Mapping with the school community Giouli Athousaki & Sylvain Adam*
- 5/ *Participatory Citizen Science (mapping climate inequalities) Eleni Mougiakou*

1/

What do we mean by « collective mapping »?

commonsplace





FAIRVILLE




Funded by the
European Union

slido.com with #1010304

<https://app.sli.do/event/quog61G6J3dNtE626XAPZx>

Active poll 0



Join at
slido.com
#1010 304

What do we mean by «collective mapping» ?



This project has received funding from the European Union's Horizon Europe research and innovation programme under the grant agreement No. 101094991. Views and opinions expressed are however those of the author(s) only and do not necessarily reflect those of the European Union. Neither the European Union nor the granting authority can be held responsible for them.



FAIRVILLE



Funded by the
European Union

commons/pace

2/

Methodology and Steps

commons/pace



This project has received funding from the European Union's Horizon Europe research and innovation programme under the grant agreement No. 101094991. Views and opinions expressed are however those of the author(s) only and do not necessarily reflect those of the European Union. Neither the European Union nor the granting authority can be held responsible for them.

Gathering local knowledge, experiences and aspirations with the local community. Spatio-temporal importance.

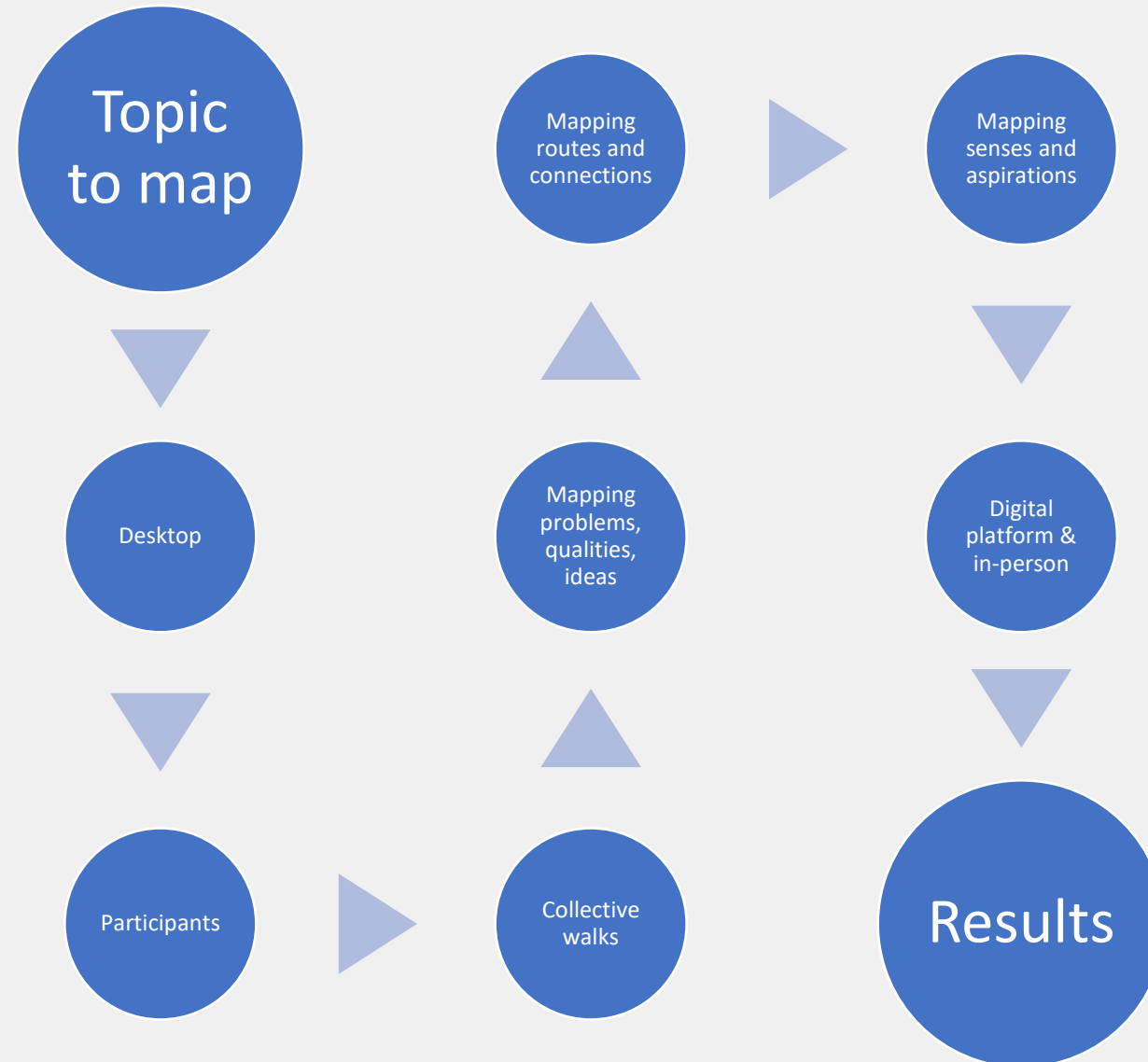
Clarify steps:

- **What** to map (tangible or intangible)
 - no spatial: community, ecosystem, stakeholders, institutions, power ...
 - spatial: current situation, aspirations, ideas, sentiments, changes over time ... scale, geometry, time
- **Who** to map **with**
- **When** is the appropriate time and **where** is the most convenient place
- **How** to map (method prepare and tools to configure)
- Follow up and present the **results**
- **Repeat?**

DRAFT THE PARTICIPATORY PLAN

- Specify participatory and mapping goals → Activities
- Target group / recruit
- Organize the activities (logistics)
- Design of adapt methods
- Chose appropriate tools and media
- Timetable
- Publish results and inform participants

Usual Workflow





FAIRVILLE



Funded by the
European Union

commons/pace

3/

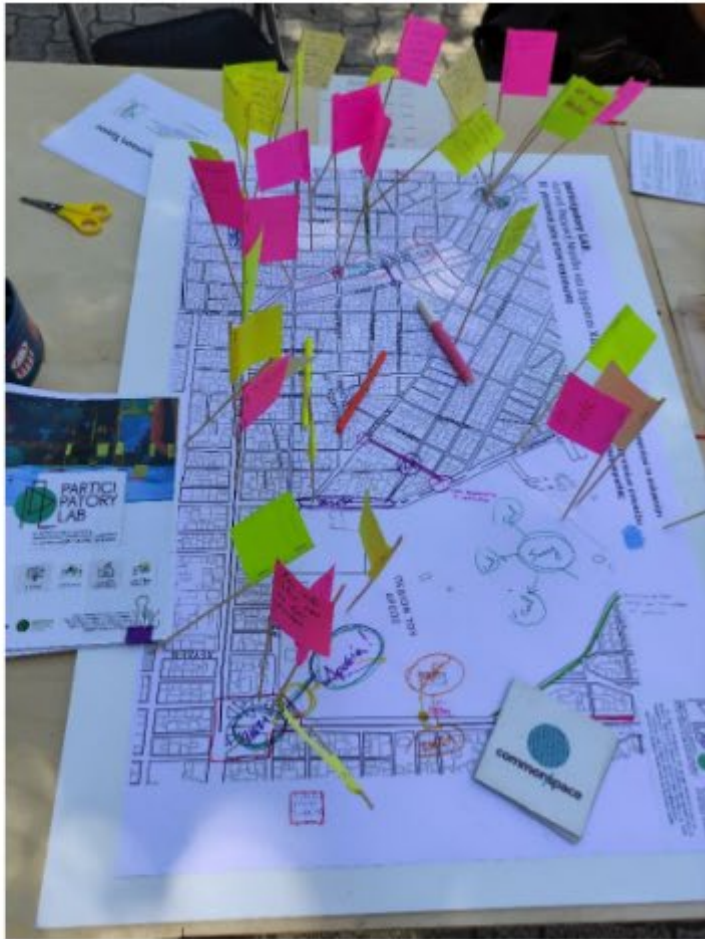
Mapping the public space (values, access, quality)

commons/pace

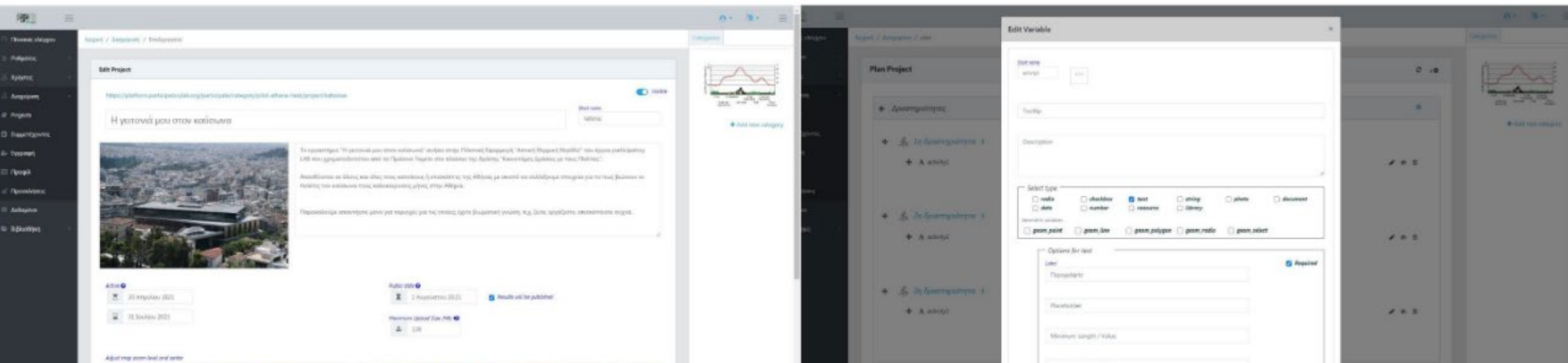


This project has received funding from the European Union's Horizon Europe research and innovation programme under the grant agreement No. 101094991. Views and opinions expressed are however those of the author(s) only and do not necessarily reflect those of the European Union. Neither the European Union nor the granting authority can be held responsible for them.

Pilot – UHI (blended) *in person*



Pilot – UHI (blended) *platform / back-end*





FAIRVILLE



Funded by the European Union

Pilot – UHI (blended) platform / front-end



ΑΠΡΗΛΙΟΣ ΔΕΛΤΑ ΝΑ ΣΥΜΜΕΤΕΧΩ ΣΥΜΜΕΤΕΧΩ ΠΑΡΑΜΟΝΕΣ ΑΔΕΙΩΣΗ

ΠΙΛΟΤΙΚΗ ΕΦΑΡΜΟΓΗ - Αστική Θερμική Ηλιθιά

Αστική Θερμική Ηλιθιά. Ένα από τα σημαντικότερα πρόβλημα του πολεοδομικού συγκροτήματος της Θεσσαλονίκης είναι η υπερβολική θέρμανση των κτιρίων κατά το χειμώνα λόγω της έλλειψης θερμομόρφησης. Αυτό έχει ως αποτέλεσμα να αυξάνεται η κατανάλωση ενέργειας για θέρμανση των κτιρίων και να αυξάνεται η ρύπανση του περιβάλλοντος.

Η γειτονιά μου στην καλιθιά

Το εργαλείο "Η γειτονιά μου στην καλιθιά" είναι ένα διαδικτυακό εργαλείο "Αστική Θερμική Ηλιθιά" που είναι βασισμένο στο εργαλείο "Αστική Θερμική Ηλιθιά" που είναι βασισμένο στο εργαλείο "Αστική Θερμική Ηλιθιά". Αποβλέπει σε όλους και όλες τους κατοίκους ή επισκέπτες της πόλης με σκοπό να αυξήσει την ενεργειακή τους συνείδηση και να τους βοηθήσει να λάβουν τις κατάλληλες ενέργειες για να μειώσουν το κόστος θέρμανσης των κτιρίων τους, να μειώσουν την κατανάλωση ενέργειας και να συμβάλουν στην αντιμετώπιση του κλιματικού αλλαγών.

Επιλέξτε την γειτονιά ή περιοχή της πόλης που επιθυμείτε να καλιθιάσετε και ο εργαλείο σας είναι έτοιμο για να χρησιμοποιήσετε.

Ενεργό:

Ποσοστό:

Αστική

Αστική

Διαλέξτε Διαλέξτε με τη πόλη

Επιλέξτε την περιοχή ή περιοχή της πόλης

Νέο
 Υπάρχον

Επιβεβαιώστε το διαλέξτε με τη πόλη με το αστικό διαμέρισμα που επιθυμείτε να καλιθιάσετε και να υποβάλει τα αποτελέσματα

Το αποτέλεσμα είναι το παρακάτω

Νέο
 Υπάρχον
 Διαθέσιμο

Υποβολή



FAIRVILLE



Funded by the European Union



Sustainable development

Gavdos communities

The Gavdos Sustainable Development Plan based on participatory design was an initiative of the Municipality of Gavdos implemented with the support of the MOU.



ICT / Digital innovation

ppCITY

An Integrated Spatial Decision Making and Participatory Planning System to monitor and plan projects and actions within the city or neighborhood, focusing on the citizens, on the environment as well as the quality of life.



Urban design

Schools / Neighborhood

Users of public space must be actively involved during all phase of the design process. The needs and visions of citizens must be integral part of the design process



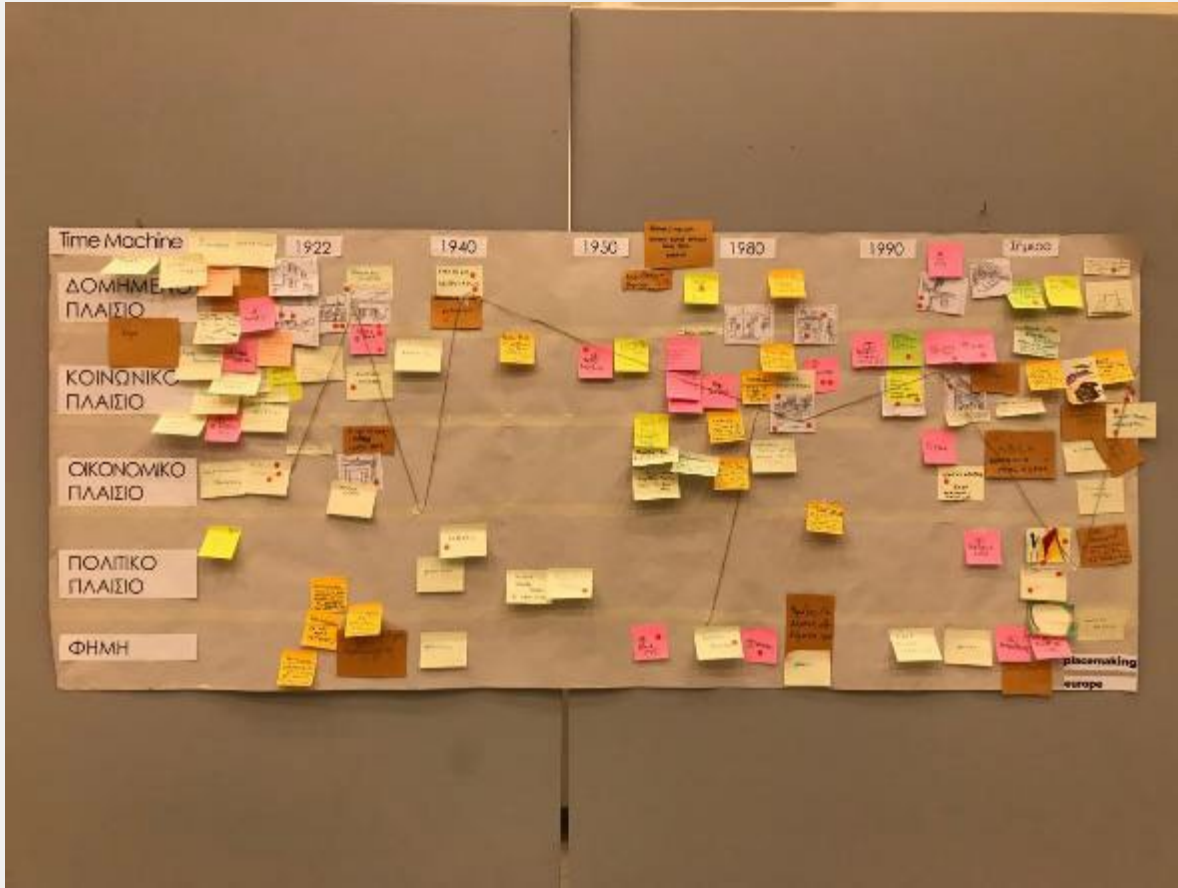
Community building

Cultural H.ID.RA.N.T. - UIA

This is a project of great local and cultural value as it aims to highlight Hadrian's Aqueduct as part of the cultural heritage of the Municipality of Halndri and the wider area.

Time machine (spatiotemporal)

<https://100memories.gr/?lang=en>





FAIRVILLE



Funded by the
European Union

commons/pace

4/

Structured processes with specific steps, depending on the age and learning stage of the students, and can be combined according to the requirements of each project.

Mapping with the school community

commons/pace



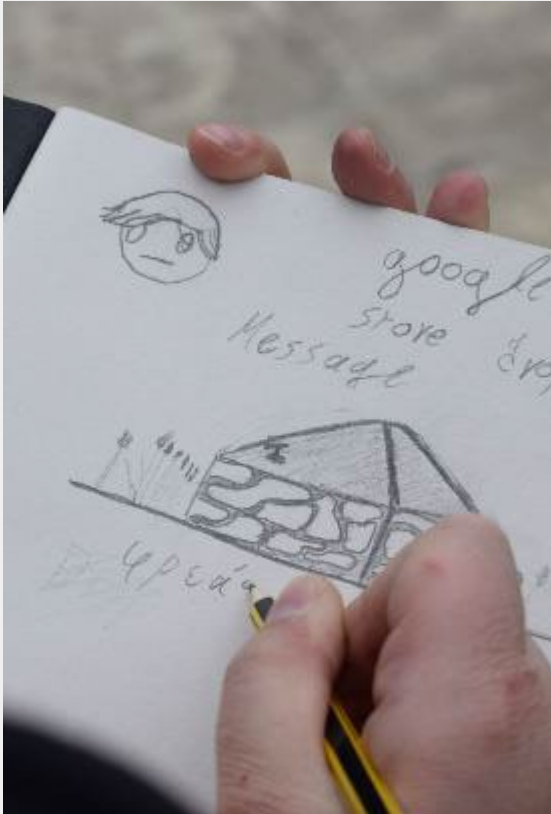
This project has received funding from the European Union's Horizon Europe research and innovation programme under the grant agreement No. 101094991. Views and opinions expressed are however those of the author(s) only and do not necessarily reflect those of the European Union. Neither the European Union nor the granting authority can be held responsible for them.

Examples of mapping (indicatively)

- Identifying collective walk
- Sensory mapping
- Aspirations / needs mapping
- Mind mapping
- Embodying space
- “Flaneurs”
- Cartography



Mapping with the
community



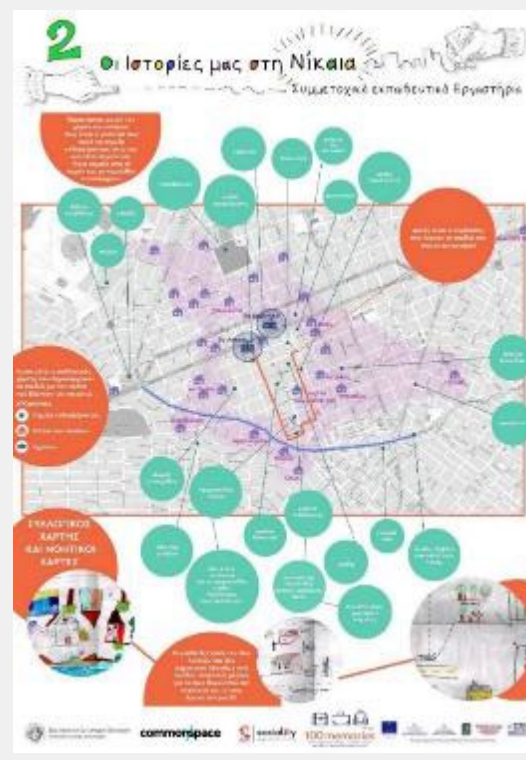
“Flaneurs”



“Conceptual”



Mind maps

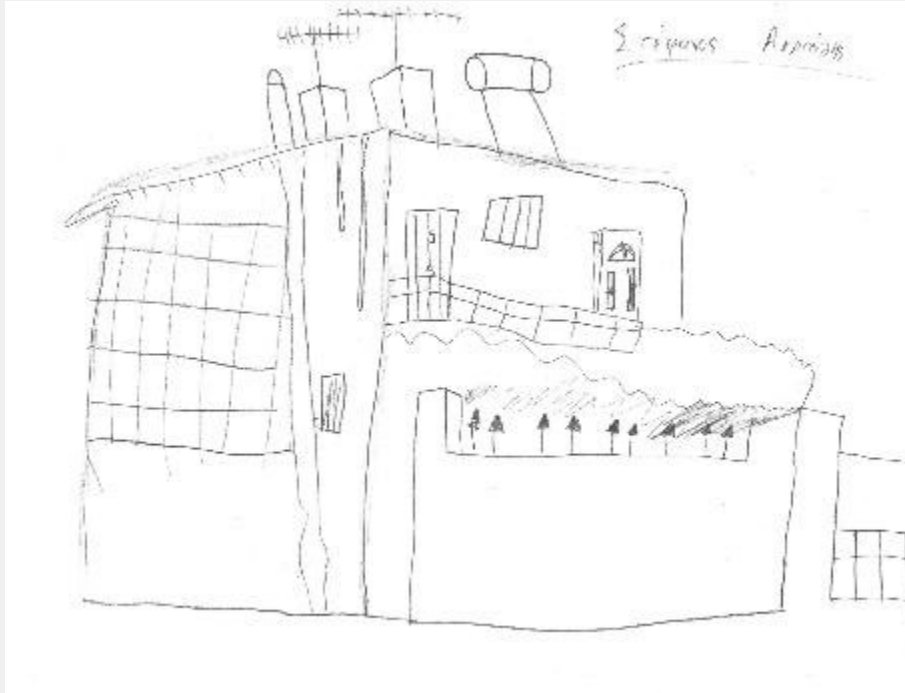


Digitalized collective mapping



Floor plans & stakeholders

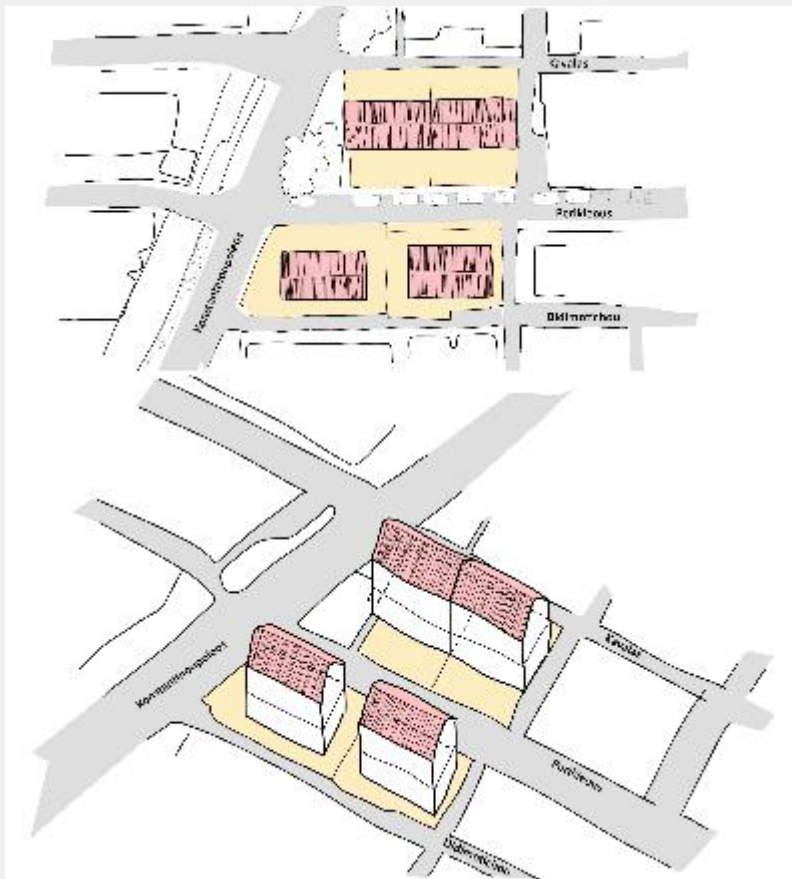
Sketching in the streets of Keratsini



Keratsini 15th school (Stefanos)



Keratsini 15th school
(Telemachos & Photis)



Refugee houses (1965)



Successive extensions (nowadays)





Festival in Lipasmata, exhibition (May 2023)





FAIRVILLE



Funded by the
European Union

commons/pace

5/

Participatory Citizen Science (mapping climate inequalities)

commons/pace

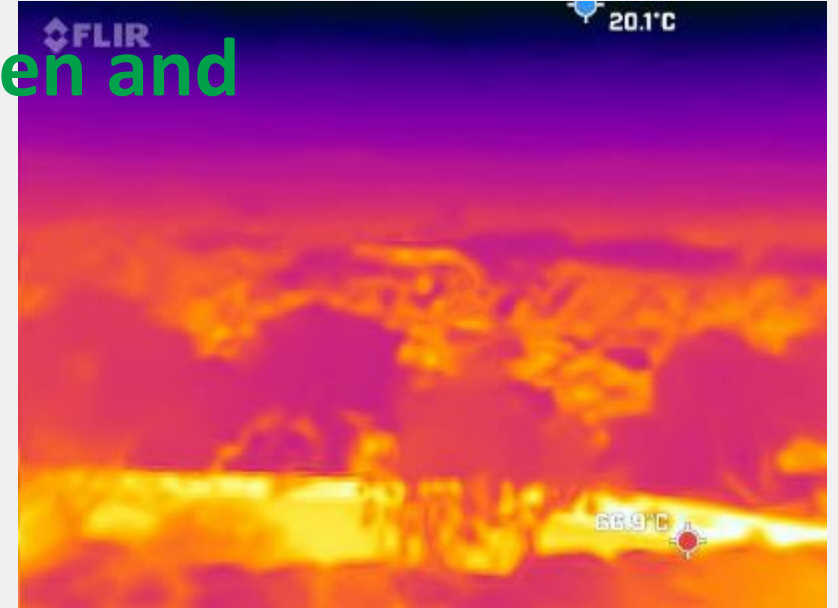
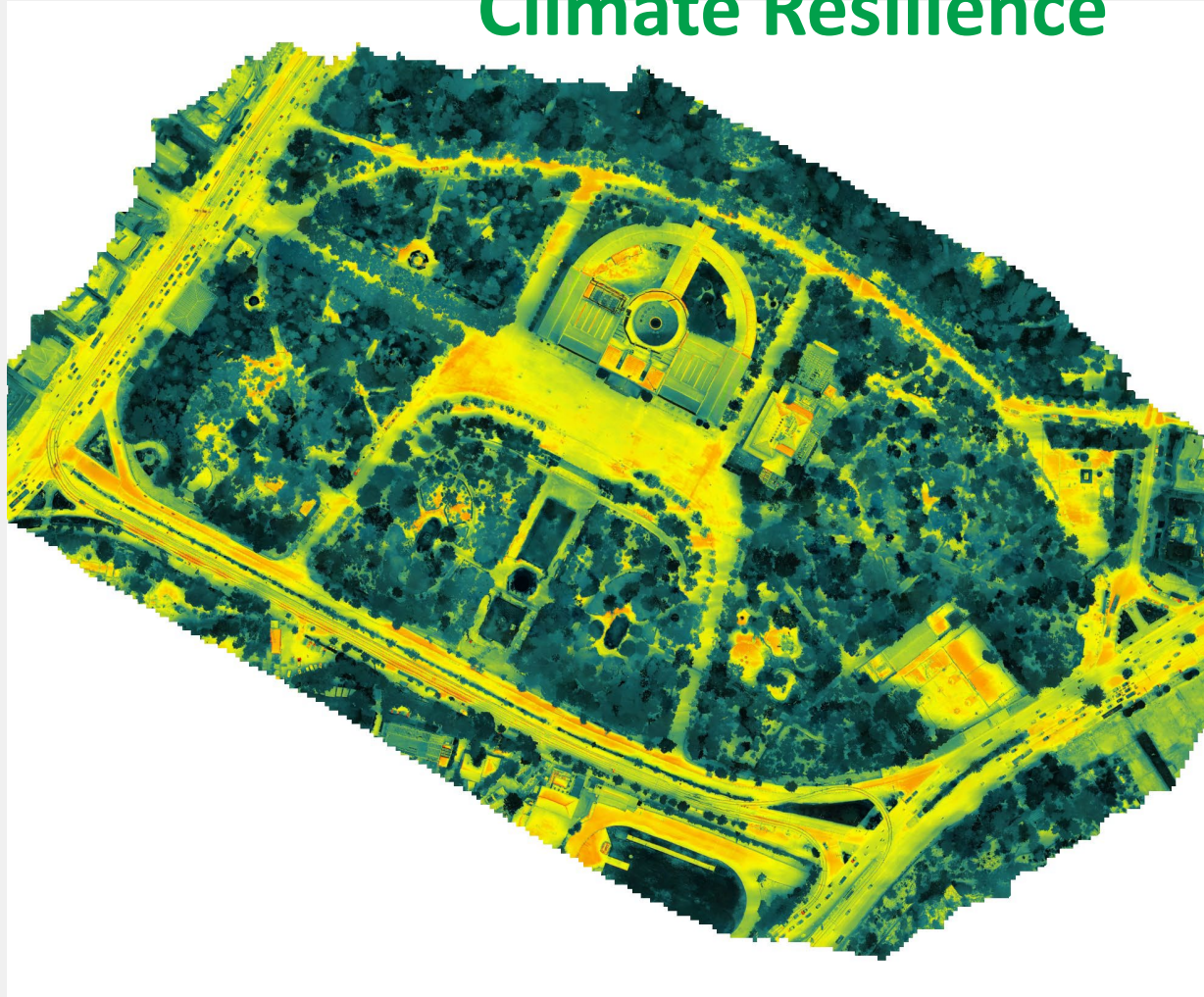


This project has received funding from the European Union's Horizon Europe research and innovation programme under the grant agreement No. 101094991. Views and opinions expressed are however those of the author(s) only and do not necessarily reflect those of the European Union. Neither the European Union nor the granting authority can be held responsible for them.

URBAN HEAT WATCH. Observatory for Urban Green and Climate Resilience



URBAN HEAT WATCH. Observatory for Urban Green and Climate Resilience

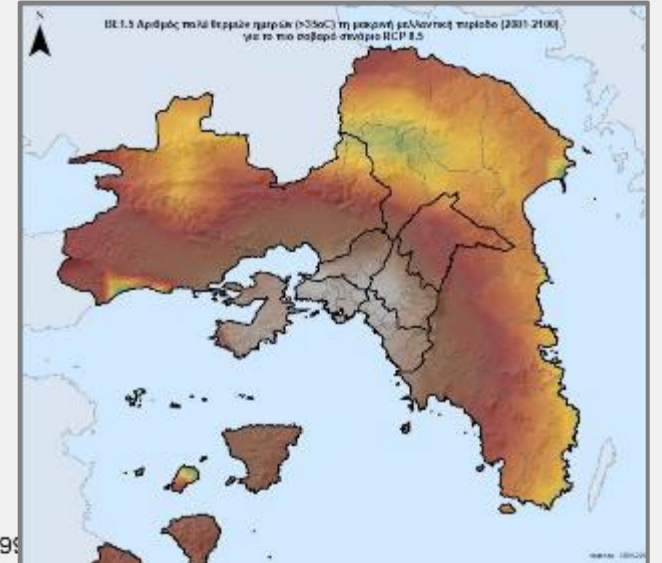
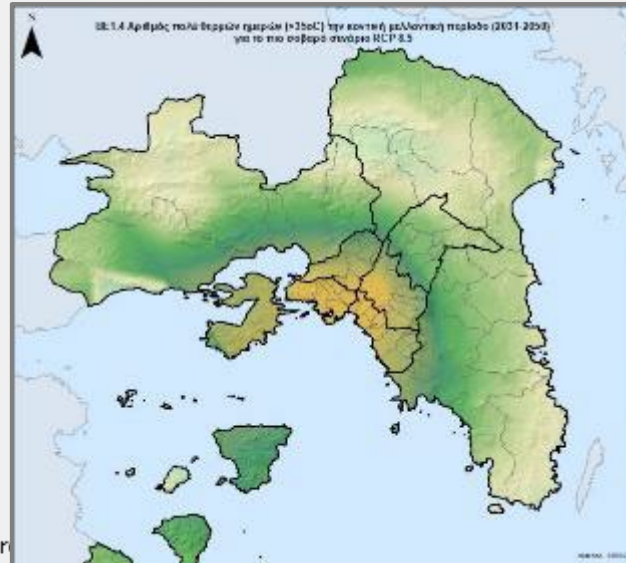
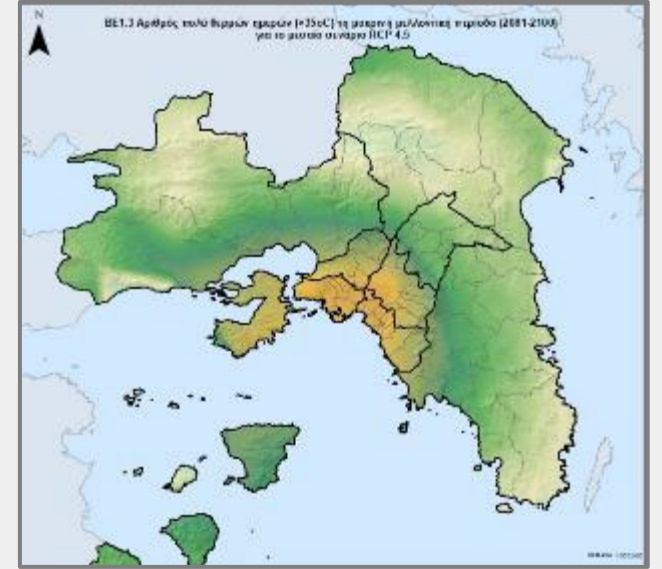
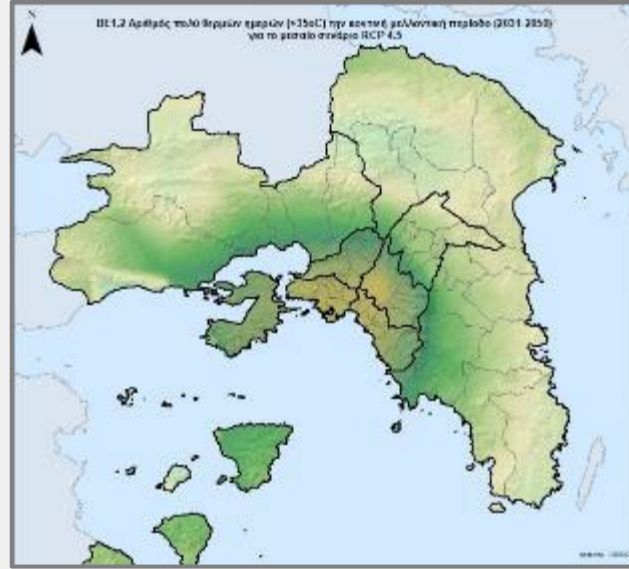
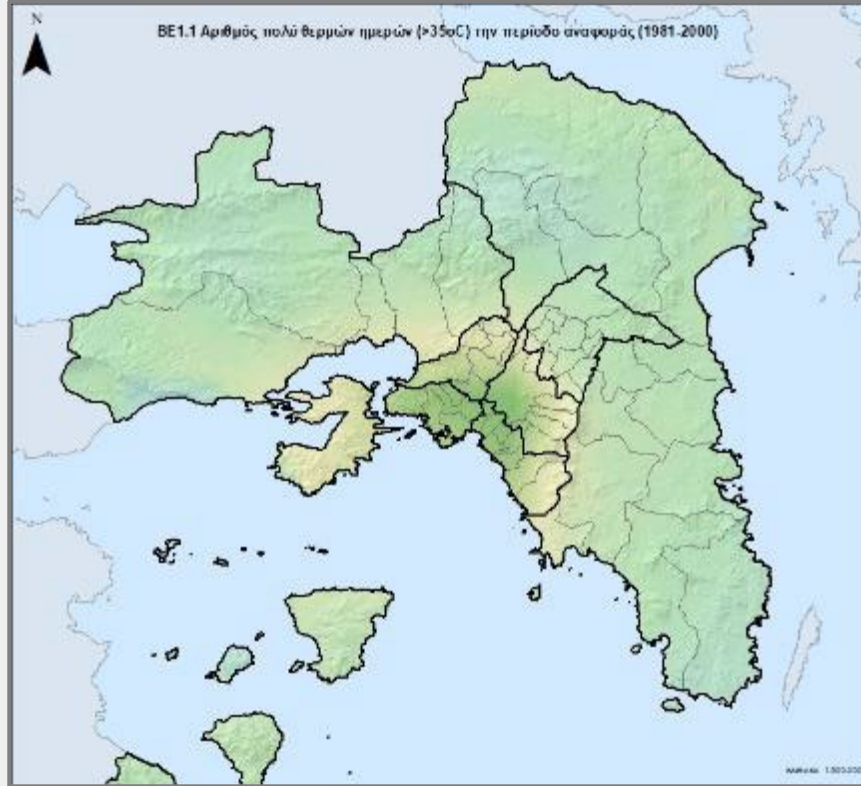




FAIRVILLE



Funded by the European Union



This project has received funding from the European Union's Horizon Europe research and innovation programme. The views and opinions expressed herein are however those of the author(s) only and do not necessarily reflect those of the European Union.

doi: 10.109499

Neither the European Union nor the granting authority can be held responsible for them.

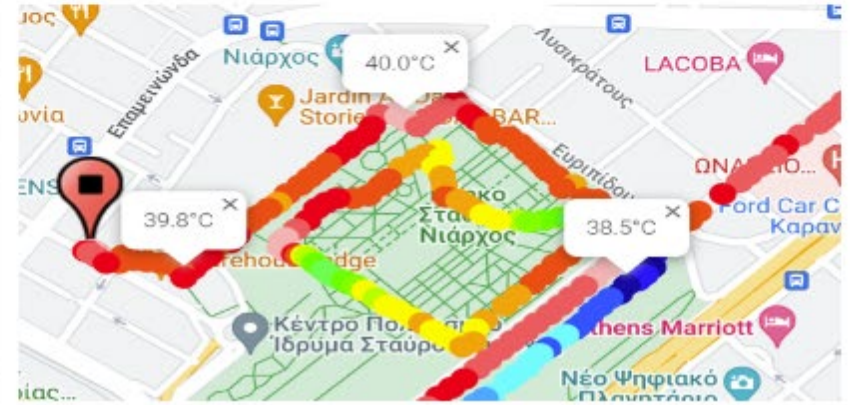
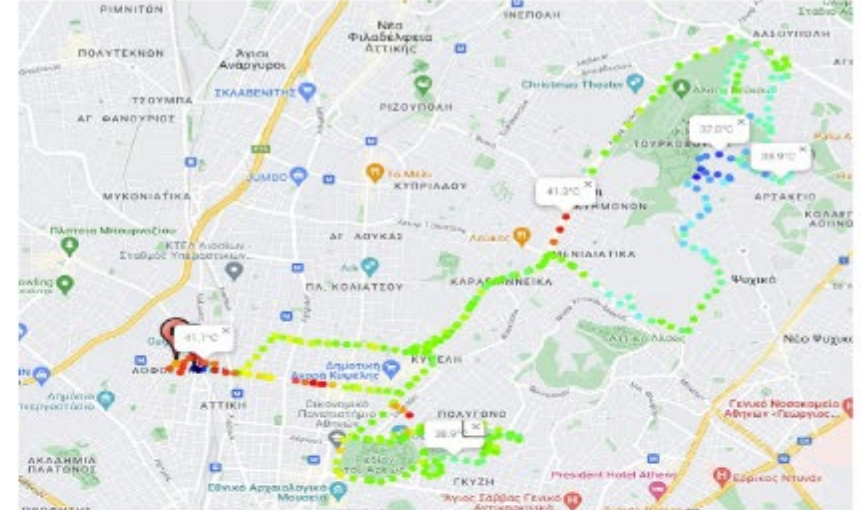
URBAN HEAT WATCH. Observatory for Urban Green and Climate Resilience



URBAN HEAT WATCH.

Observatory for Urban Green and Climate Resilience

Routes





URBAN HEAT WATCH.

Observatory for Urban Green and Climate Resilience

UrbanHeatWatch viewer

Layout double

Variable
Humidex

From 1/7/2022

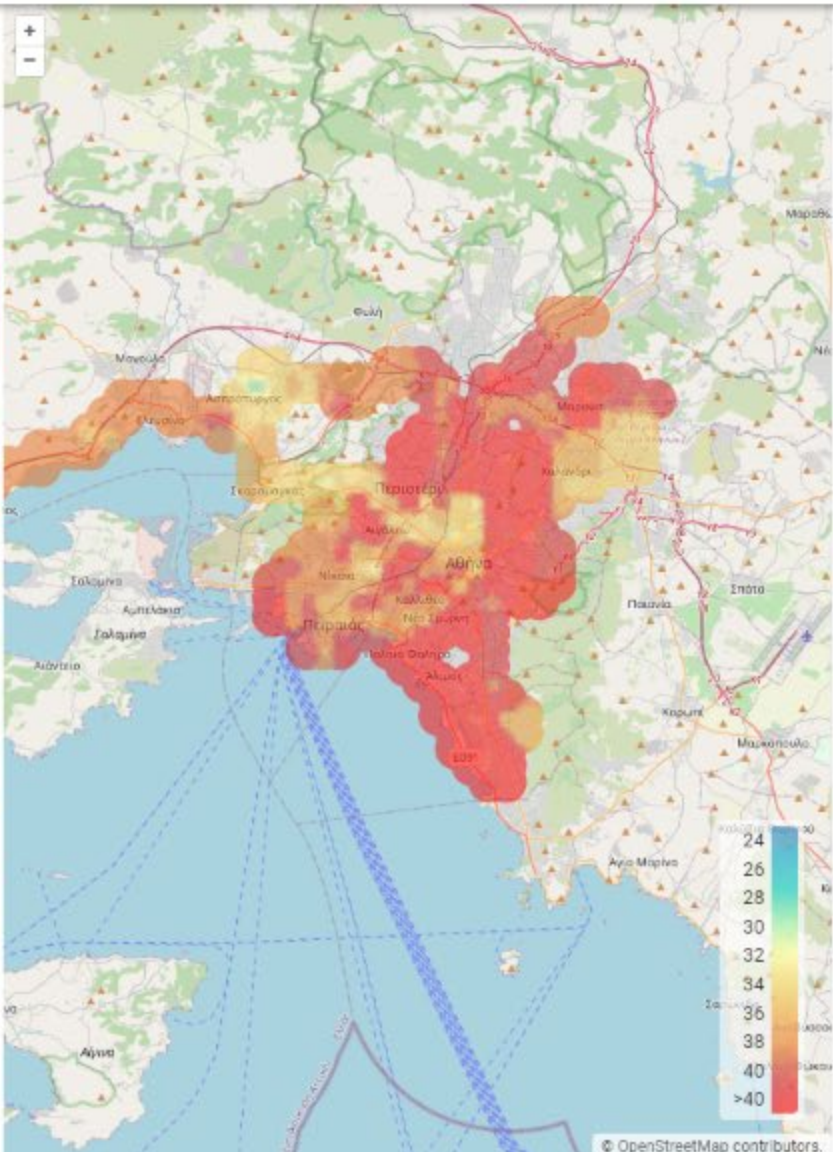
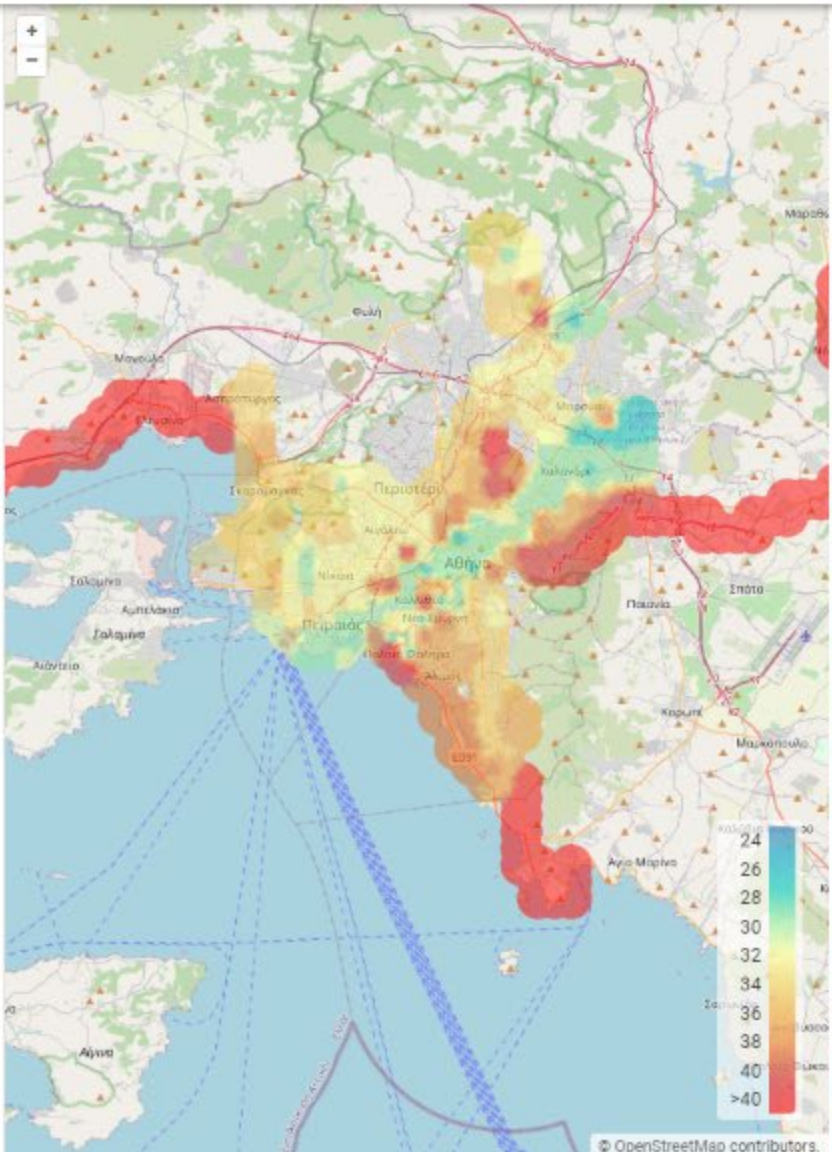
To 1/9/2022

show advanced filters

From 0:00 To 24:00

Aggregation
Minimum

SUBMIT



Variable
Humidex

From 1/7/2023

To 1/9/2023

show advanced filters

From 0:00 To 24:00

Aggregation
Minimum

SUBMIT



FAIRVILLE



**Funded by the
European Union**

