

West Attica FvL's Methodology

Authors: commonspace

Towards co-producing a participatory Atlas of (environmental) inequalities in West Attica: 1st period of FV Lab action

West Attica Fairville Lab is a community in the making that aims to map and address the socio-environmental inequalities in the 'backyard' areas of Athens, by giving voice to local actors and their aspirations. More specifically, the broader objectives are to: 1) enhance the visibility of local actors and initiatives, 2) provide local community support and contribute to advocacy schemes, and 3) co-produce a regional strategy and local urban plans at both the local and the regional level while bringing to spotlight the "invisible" inequalities. West Attica Fairville Lab plans to **co-produce a participatory Atlas** with key local actors, environmental activists, researchers, artists, local community organizations and school communities. The Atlas will spotlight invisible stories and links and will serve as a source of critical information on the poorly documented environmental justice issues in West Attica region. The overarching goal of the Atlas is to be used for the co-creation of concrete policy proposals (e.g. action plans directed to the local and regional authorities) or targeted research towards addressing multi-level inequalities.

The methodology of the West Attica Fairville Lab unfolds in the following consecutive phases:

1/ Exploratory phase: Preparing the ground through desk research, stakeholder mapping, exploratory field visits and meetings with key local informants (mainly local activists).

2/ Launch Phase:

- Start building West Attica Fairville Lab network through **open call** for participation, addressed to local environmental and social movements, researchers with relevant activity and residents.
- Introductory discussion about environmental inequalities and early identification of possible thematic areas and form of the Atlas.
- **Common online platform** for collection/ exchange of relevant material and ideas.

3/ Co-production Phase: Co-design and co-creation of the Participatory Atlas through several **meetings and participatory processes with different contextual and thematic focus**, that involve the core Lab team (commonsense team, local activists, researchers, some residents) and targeted divergent local groups, according to the distinct geographical reference or topic. These processes will result to specific co-produced outputs for the Atlas, while making visible the stories of the voiceless.

They are presented below:

- **“Local workshops” in different urban centres in West Attica**

The series of “local workshops” are organized together with key local actors, as successive cycles of participatory research and mapping activities. They focus on specific contextualized environmental issues and inequalities and materialize in a three-step process: (1) identification of local issues (input by key local actors – activists, discussion, collective walks), (2) participatory collection of local knowledge material and data (oral histories – informal interviews, citizen science etc), (3) synthesis through tools such as collective mapping, participatory time machine, power mapping. The locations and the respective entry topics are: a) Fyli: landfill/ waste management, b) Aspropyrgos: Informal settlements/ Logistic sector, c) Elefsina: industries and access to sea-front, d) Mandra: climate risks (e.g. floods). Aim of the “local workshops” is to further build the West Attica Fairville Lab community and deepen the connections and synergies with local actors in the different areas of West Attica.

- **School Workshop Series**

Based on the issues and challenges discussed and explored during the “local workshops”, another series of workshops will be designed and organized with the local school community. By introducing questions of environmental justice in schools with high rates of students from vulnerable social groups (Roma community, migrants), the aim is to listen and make visible the views and aspirations of the kids growing up in the area. For the closing of these sessions a common gathering will take place, that will enable the exchange between the students from different schools of West Attica. Parallel to giving voice to the young West Attica residents, the school workshops are a way to approach and engage the most vulnerable local groups, such as the Roma community.

- **Parallel Actions**

The series of workshops and meetings will be complemented by additional targeted actions, such as in-depth interviews with key local actors or field trips.

- **“Transversal” West Attica Fairville Lab meetings**

As parallel process to the targeted workshops and actions, “transversal” meetings of the West Attica Fairville Lab network will be organized, to co-design the form and structure of the Atlas. For this purpose, working groups within the core team of West Attica Fairville Lab might be created, continuously enlarged or reshaped.

4/ Co-production Upscaling Phase

The Atlas co-production phase aims (1) to the gradual development and consolidation of an active West Attica Fairville Lab network and (2) to the collective identification and mapping of socio-environmental inequalities in the region. The upcoming stage will be the co-production upscaling, that refers to the utilization of the gathered knowledge and experience for the co-production of specific policy proposals (e.g. action plans directed to the local and regional authorities) towards addressing and reducing the multi-level inequalities.

Methodology Diagram: Participation Plan for West Attica FV Lab / 1st Period Activities

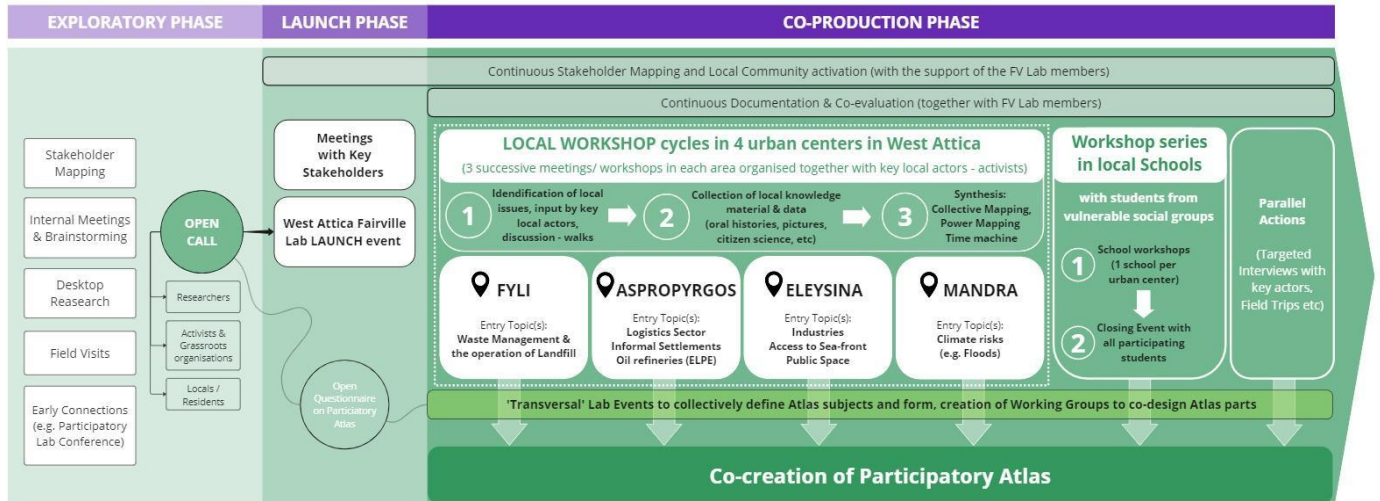


Figure 15: Methodology Diagram, Participation Plan for West Attica FvL, 1st Period Activities.
Source: West Attica FvL